



## Crown Field Support Engineering

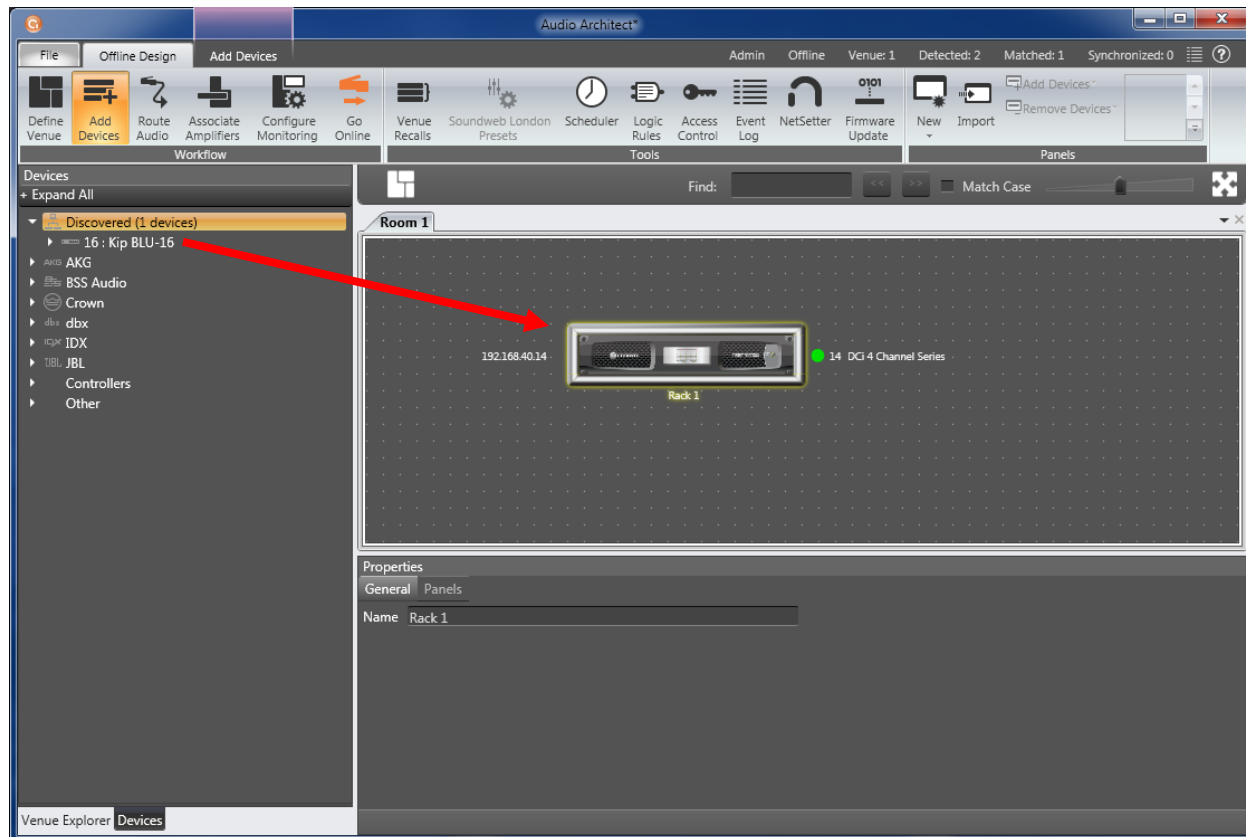
**Issue Date:** 15 May 2014

**Ref. No:** DCiN #0003

**Subject:** DCiN Y Input Configuration

**Applicability:** The following set of instructions will walk you through configuring your DCi Network version amplifier for Y input operation using Audio Architect. **\*\*Note: All DCi amplifiers ship from the factory defaulted for discrete channel operation.\*\***

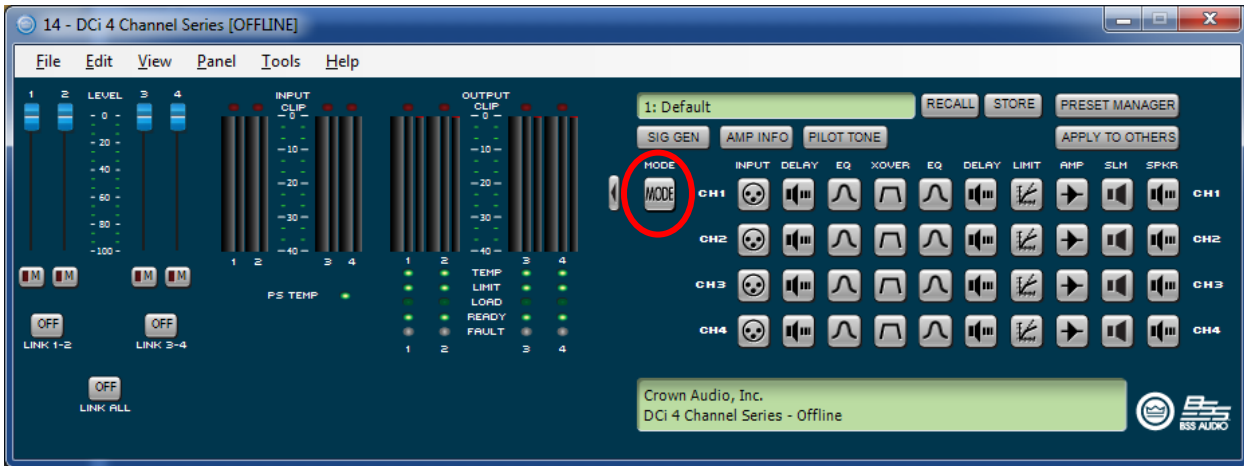
**Step 1:** After you launch Audio Architect, click and drag the DCi-N amplifier from the “Discovered” folder on the left to the main “Room 1” window on the right as shown below. Now you can pre-configure your amplifier prior to going online.



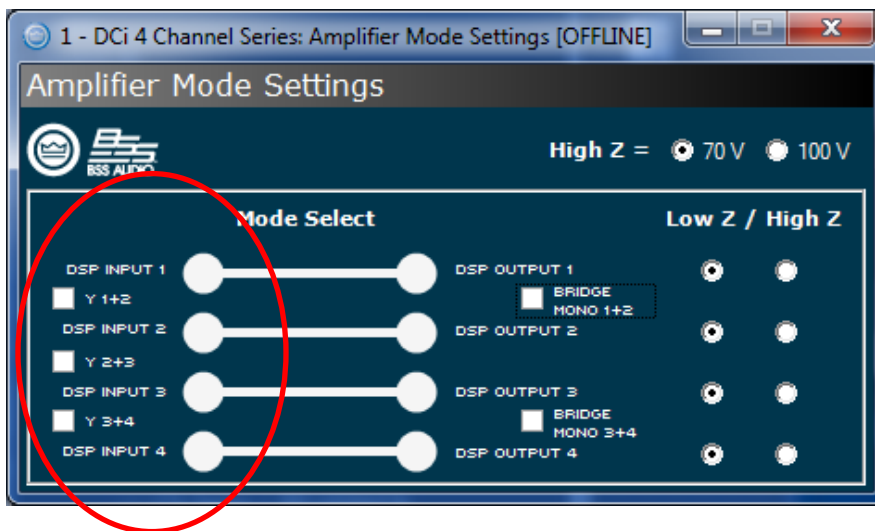
**Step 2:** Double click on the amplifier to open the Default Device Panel.



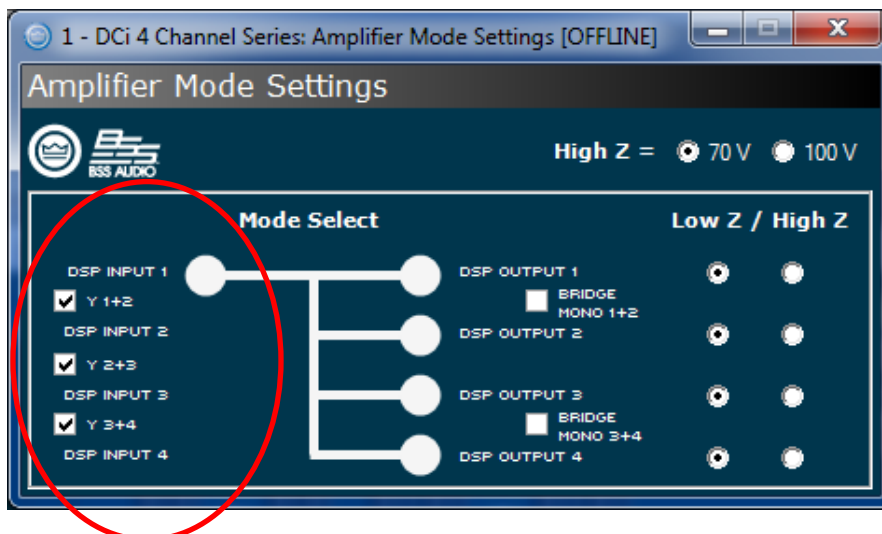
**Step 3:** With the Default Device Panel open, you will see a button labeled “MODE” as indicated in the image below. Double click on the MODE button to open the Amplifier Mode Settings window.



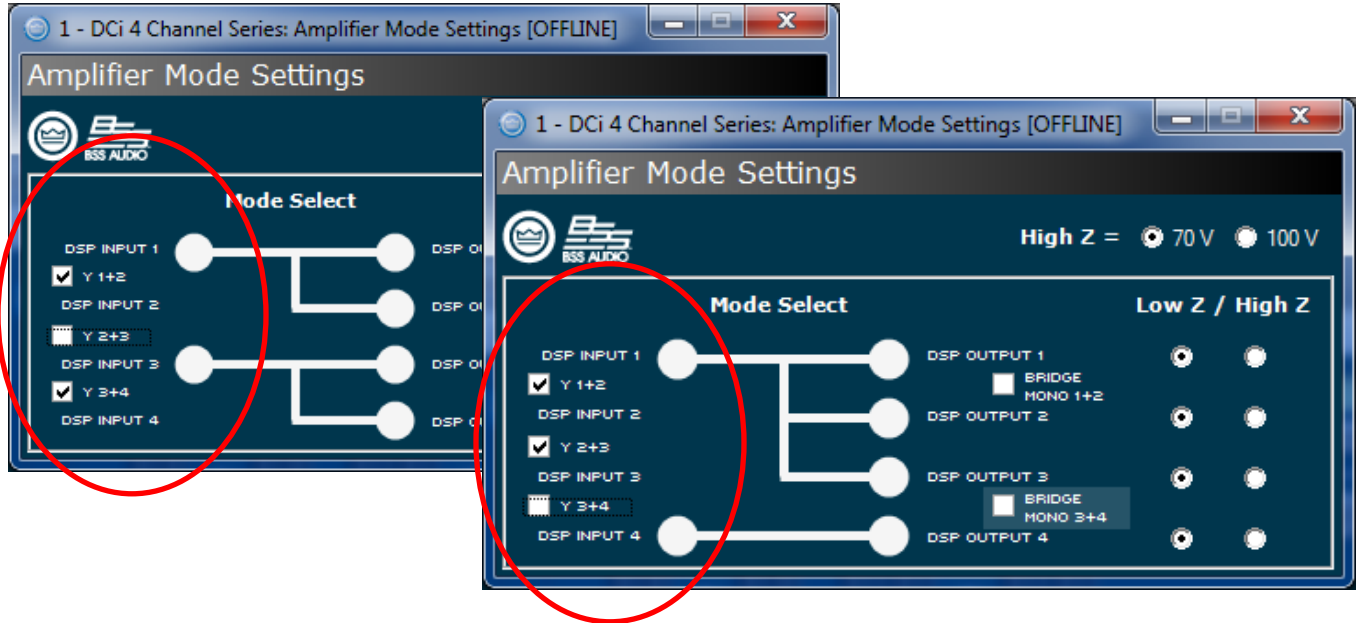
**Step 4:** In the left hand side of the Amplifier Mode Settings window you will see the options for selecting your DSP Input Y features.



**Step 5:** Here you can configure which mode is best for your application. You can active the Y function so all channels are getting the same signal connected to Input 1 by checking all the “Y” boxes.



**Step 6:** Here's examples of other modes activated based on application or design needs for routing the input signal to amplifier outputs.



This “Y” feature is a DSP function so there is no need to daisy chain the analog phoenix connectors together with wire externally. By clicking the “Y” boxes you are linking the inputs together and you still have the independent level controls or attenuators for each channel to properly set your gain.