

S02EMS5CA21B OPS ON BOARD COMPUTER

Hisense Interactive displays comes with an OPS slot (Open Pluggable Specification) giving you the ability to integrate a computer into the display. The integrated OPS computer utilises powerful Intel processors to bring you all the power of a desktop computer within the interactive display maximising its versatility and compatibility. It can be used in education, conference whiteboards and digital signage and other scenarios.

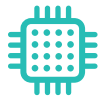


Highlights



12th Generation

Intel 12th generation Core i5 processor



Single-Channel Memory

Dual-channel memory, support up to 32GB



Multiple Storage Methods

Support M.2 SATA /NVME multiple storage methods, TPM encryption



Support Bluetooth 5.2

Version 5.2 makes Bluetooth smarter, faster and the ideal wireless technology supporting up to 1Mbps.



MSATA System Disk

Support one click restore to enhance user experience



Support WiFi 6 and Wired Network

WiFi 6 (IEEE 802.11ax) is the sixth-generation wireless network standard in the IEEE 802.11, providing high throughput in wireless local area networks (LANs).



Security without worries

Update System to Win 11 Pro, an operating system that supports a zero-trust security model can protect data and access security anytime, anywhere.



Efficient productivity

With a streamlined user interface, easily organized snap layouts, and personalized widgets, employees can work more easily and without burden.



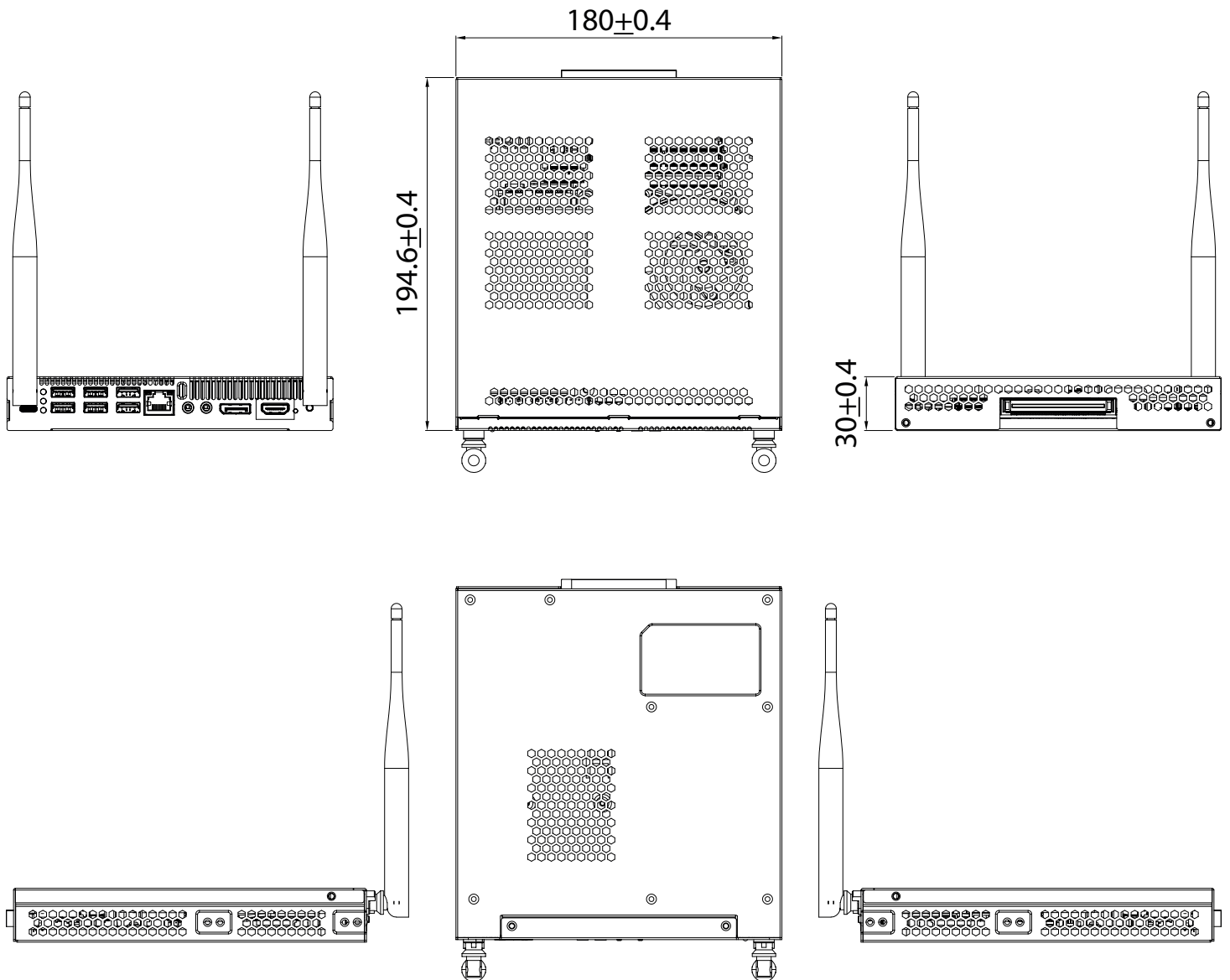
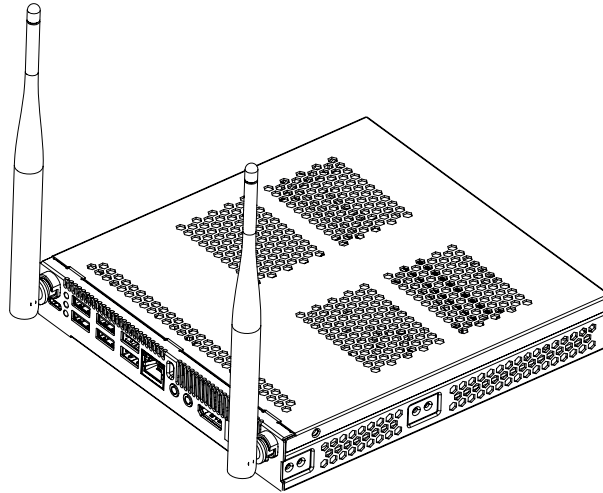
Specifications

OPS

Model Name	S02EMS5CA21B
CPU	Intel Core TM I5-12450H
RAM	16GB
SSD	256G
LAN	Integrated 10/100/1000M Adaption
WIFI	WIFI 6
Bluetooth	Bluetooth 5.2
USB 3.0	4
USB 2.0	2
HDMI out	1 (2.0)
DP out	1 (1.2)
VGA	/
Mic in	1
Line out	1
HDD LED	1
Power LED	1
Power Requirements	12V- 19V DC
Max Power	90W
Standby Power	0.5W
Color	Black
Dimension LxWxH	180x195x30(mm)
Net Weight	1.4kg
Operation Temperature	0° C - 40° C
Operation Humidity	10%-90%
Storage Temperature	-20° C - 60° C
Storage Humidity	10% - 90%
System	Win11-Pro
Certification	CB/CE/cTUVus/UKCA/FCC/IC
Adaptive Model	65MR6DE/75MR6DE/86MR6DE/65MR6DE-E/75MR6DE-E/86MR6DE-E/65MR61DE-E/75MR61DE-E/86MR61DE-E/86X1EE

* Product specifications may vary per region, and specifications are subject to change. This material may include corporate names and trademarks of third parties which are the properties of the third parties respectively.

Dimensions



* Product specifications may vary per region, and specifications are subject to change. This material may include corporate names and trademarks of third parties which are the properties of the third parties respectively.